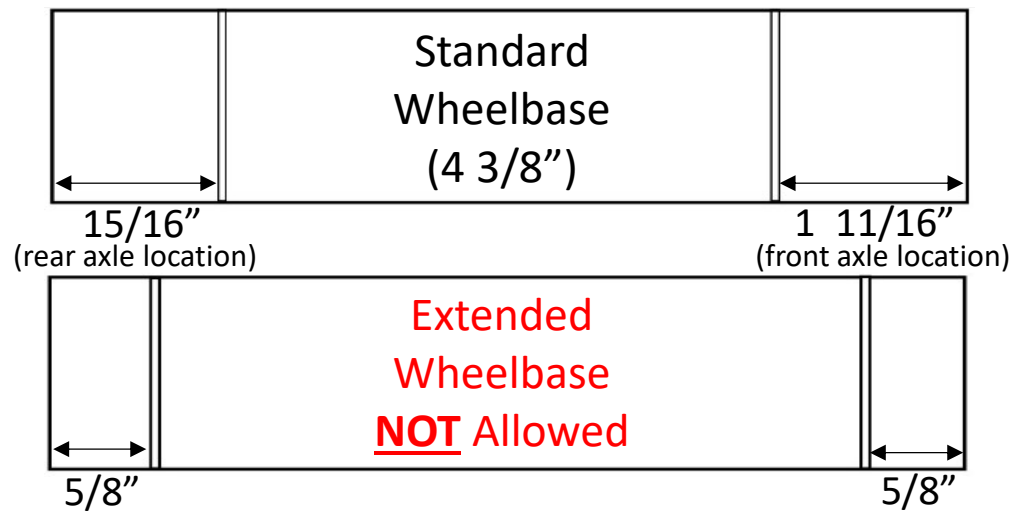
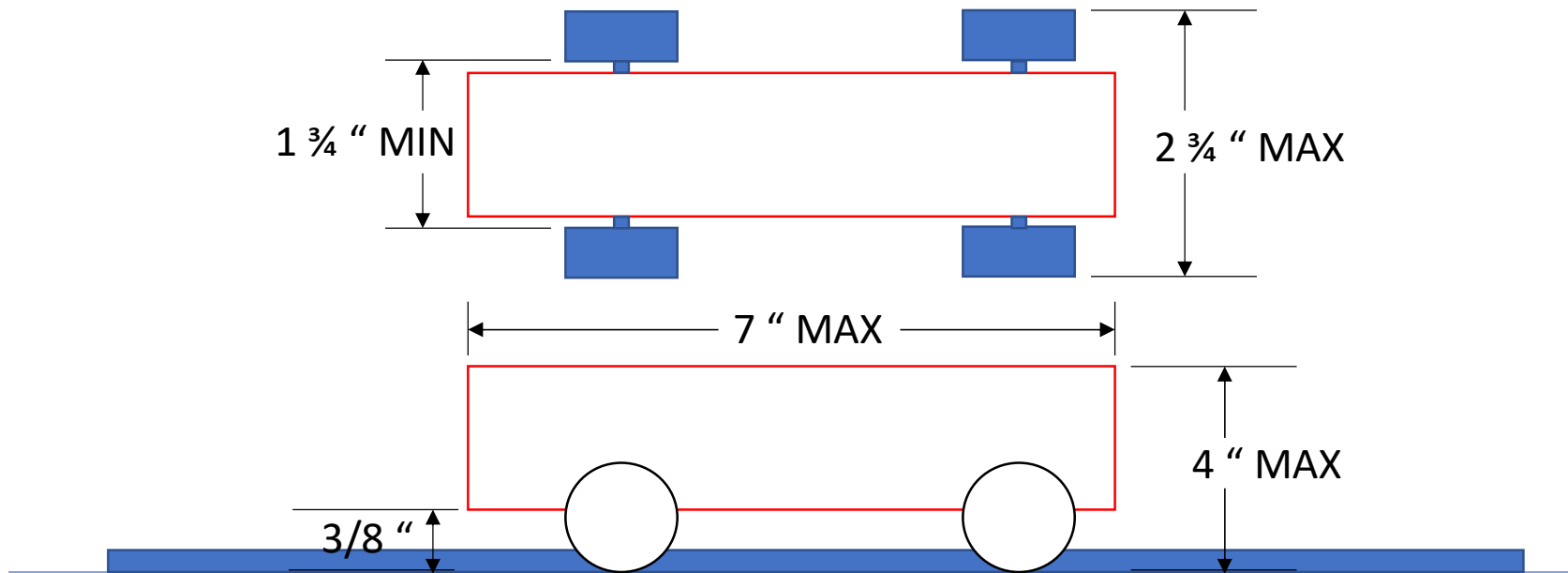


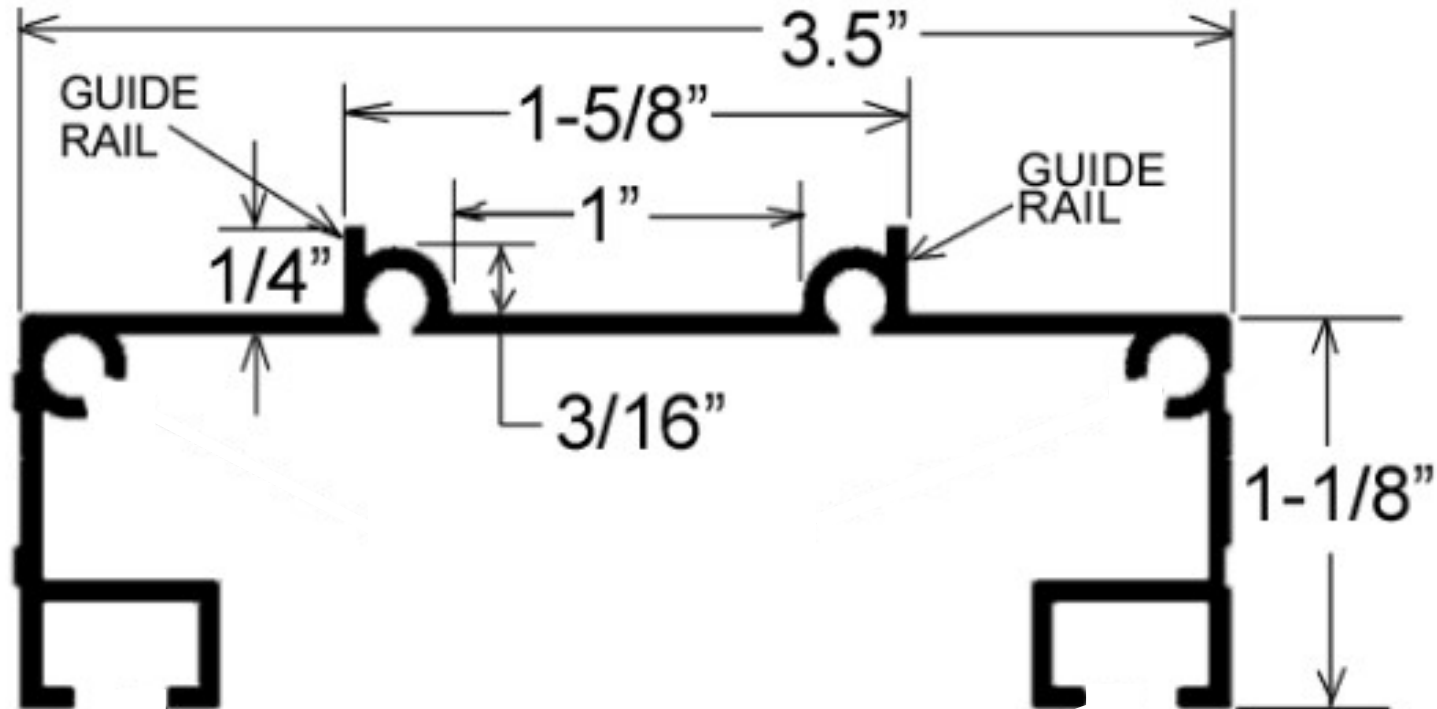
# CAR SPECS



See Page 2 & 3 of the rules



## END VIEW OF SINGLE TRACK LANE

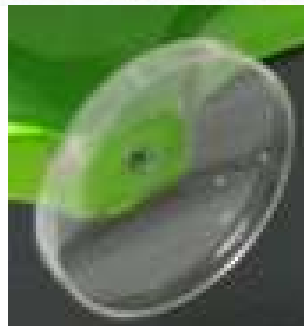
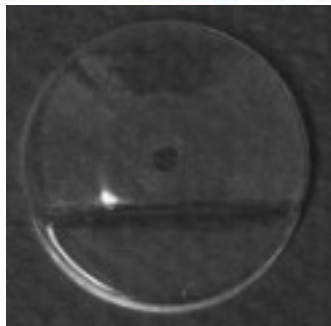


Your PWD car must meet the car specs on page 1 to ensure it fits on the track correctly, doesn't hit the car next to it during the race, and clears the timer at the end of the track.



# WHEELS

<p>STANDARD WHEEL</p>					
		ROUNDED WHEEL	"V" WHEEL	CUPPED WHEEL	REDUCED DIAMETER
"H" WHEEL	RIBBED WHEEL	SPEED WHEEL	SLANTED OUT	SLANTED IN	KNIFE EDGE



Reshaping of the wheels and Air Guides are NOT allowed.

See Page 3 & 4 of the rules

# WHEELS cont.



Standard BSA Wheel



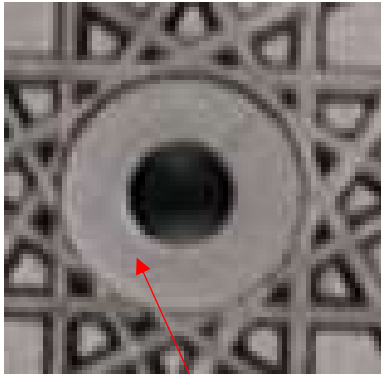
PineCar Wheel



Outside Wheel Fluting



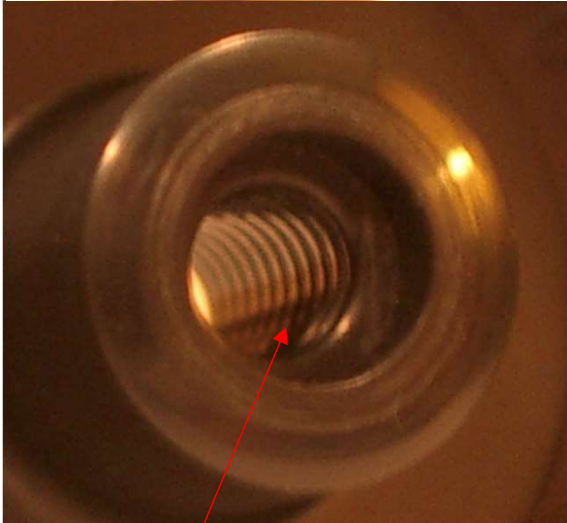
Standard Outside Wheel Hub



Outside Wheel Hub w/ step removed



Wheel Hub Tapping



See Page 3 & 4 of the rules

# AXLES



Standard BSA Axle



Crimp Marks Removed



Polished Standard BSA Axle w/ beveled axle head



Standard Axle w/ groove



Canted or Bent Axles are **NOT** allowed

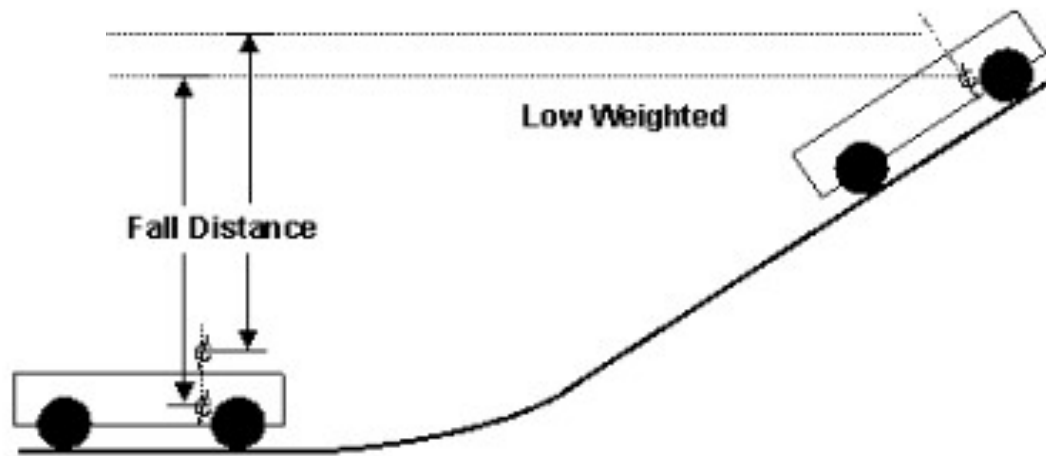
See Page 4 of the rules



Canted or Bent Wheels are **NOT** allowed



One raised wheel is **NOT** allowed



High-weighted Fall Distance = 96.5% of Low-Weighted

Weight placement is key in getting the car to the finish line